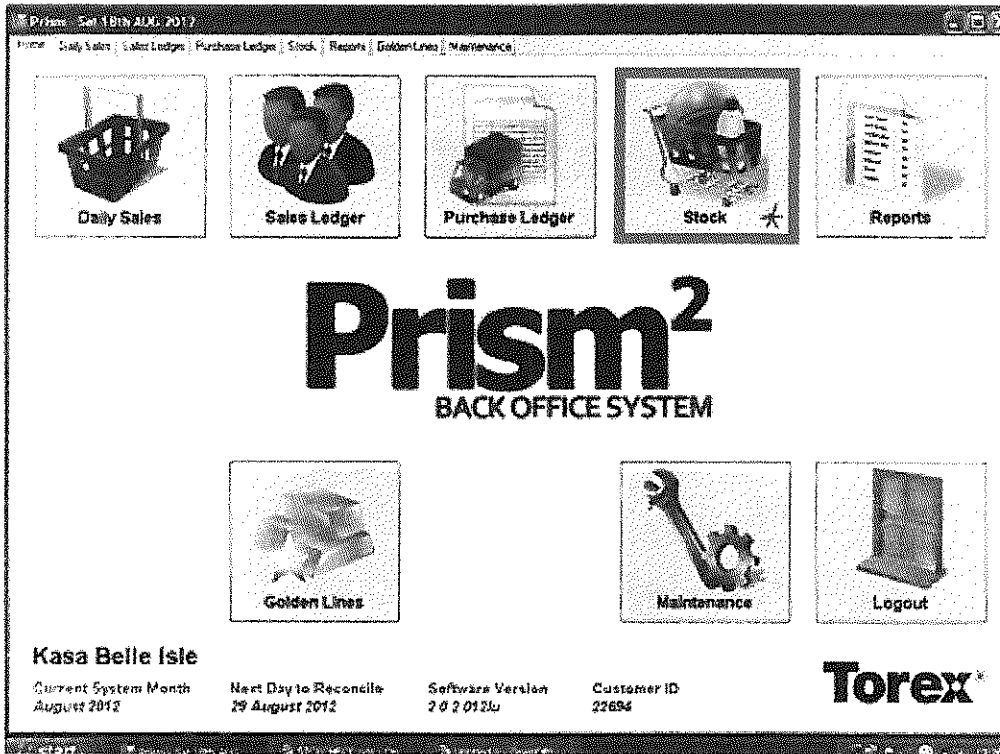
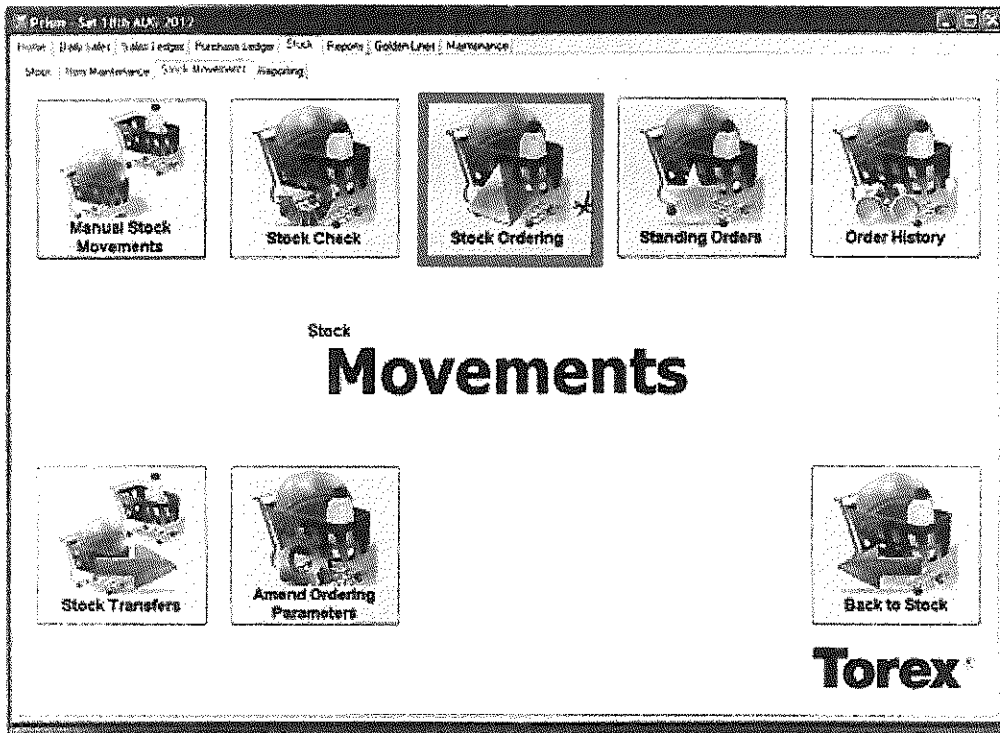


KASA BELLE ISLE ORDERING PROCEDURE

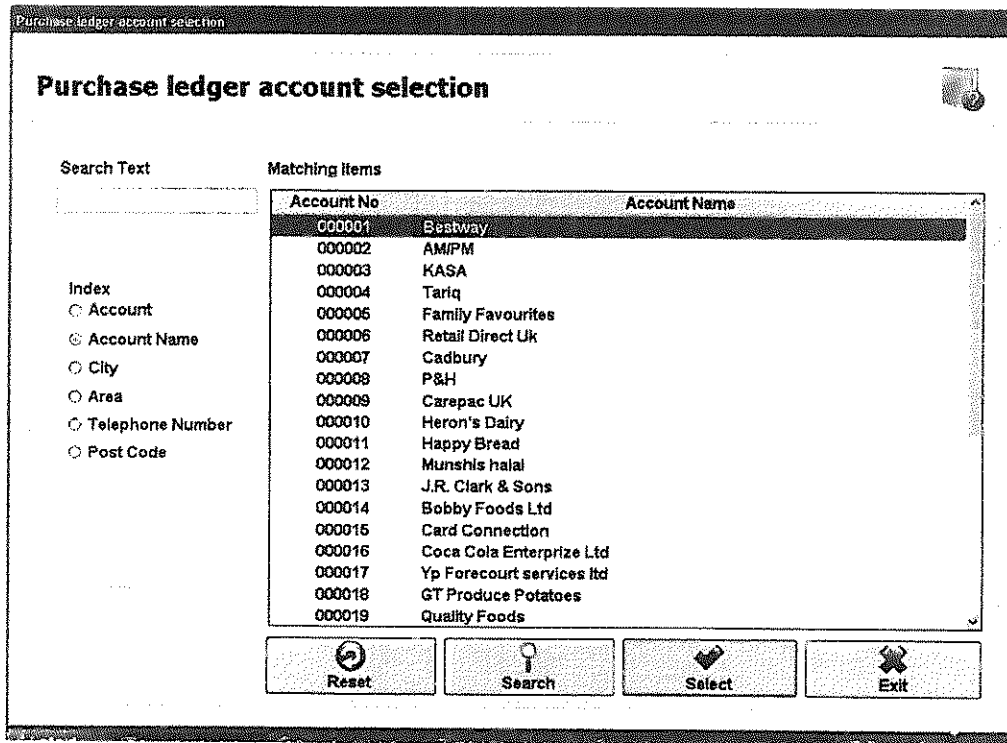
Stage one, Starting from the main menu



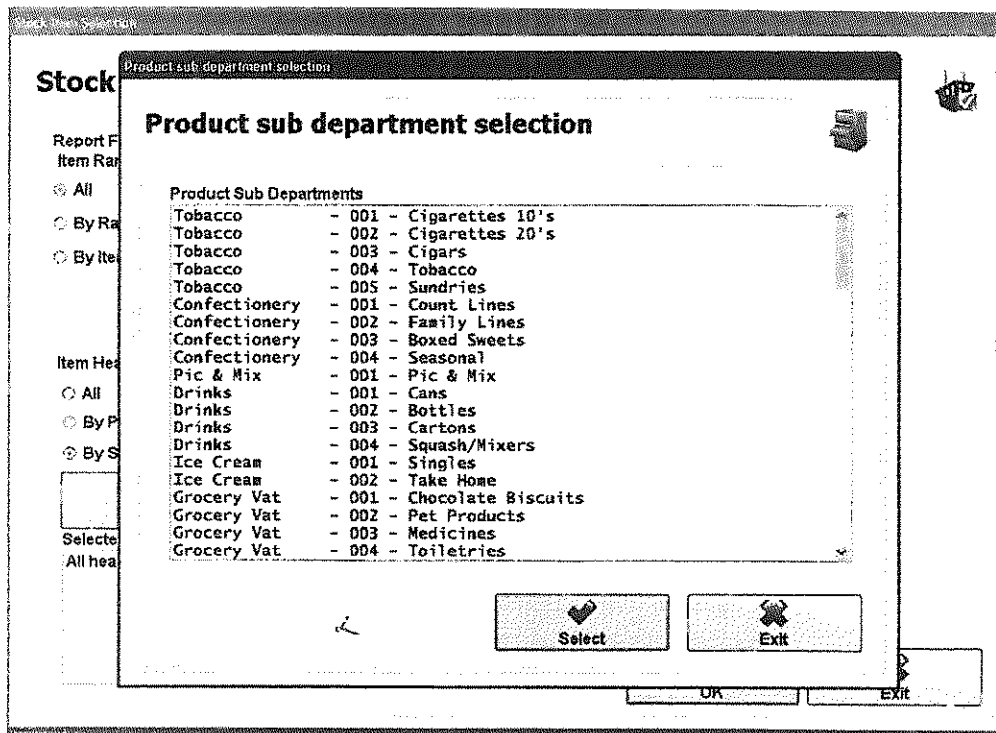
1. On the main menu screen click on to the "Stock" icon.



2. Then Click on to "stock ordering"



3. Select the cash and carry, which have been predetermined and vetted by premises supervisor, in which he is only permitted to input the information under a separate login. Than this will take you to a sub department showing you all the stock you buy from the cash and carry. You can select the sub department you want to buy. I.e. Tobacco or Alcohol.



- Once the department has been selected it will bring up all the items you buy from the cash and carry in this example it shows some of the beers we buy from Bestways. It also shows your current stock levels from Bestways and your weekly sales of the produced

Print: Tue 28/08/2012

Stock orders

Amend Order

| Item Code | Supplier's Code | Pack Cost | Pack Size | Description | Min. Stock | Items On Order | Stock Lvl | Pks to Order | Order Value |
|-----------|-----------------|-----------|-----------|-------------------------------|------------|----------------|-----------|--------------|-------------|
| 280062 | 142306 | 19.09 | 24 | Stella Artois 600ml | 1 | 0 | 680 | 0 | 0.00 |
| 280069 | 148067 | 16.25 | 24 | Coors Light 600ml | 1 | 0 | 0 | 1 | 16.25 |
| 280109 | 124216 | 17.99 | 24 | Carling Prem 600ML | 1 | 0 | 62 | 0 | 0.00 |
| 280112 | 619862 | 14.55 | 6 | Becks Vier 6x440ml can pms.00 | 1 | 0 | 0 | 1 | 14.55 |
| 280134 | 058069 | 14.79 | 24 | Stones Bitter 440ml can | 1 | 0 | 82 | 0 | 0.00 |
| 280229 | | 0.80 | 24 | Boddingtons Draught bitter | 1 | 0 | 84 | 0 | 0.00 |
| 280233 | 118902 | 16.25 | 24 | John Smith 600ml | 1 | 0 | 49 | 0 | 0.00 |

Lines: 8 Total: 2 50.90

Add Item

Create Item

Add HTML File

Extract Item

Sort

Delete Item

Amend Item

Add Product

Weekly Info

Weekly Sales History
Stella Artois 500ml

| 01/09/2012 | 25/08/2012 | 18/08/2012 | 11/08/2012 | 04/08/2012 | 28/07/2012 |
|------------|------------|------------|------------|------------|------------|
| | | | | | |

Update

Exit

- Once you have selected the amount of new stock to want to order, press "Update"

Print: Tue 28/08/2012

Stock orders

Select Orders

| Supplier | Delivery Date | Reference | Status |
|-----------------|---------------|-----------|--------|
| TB Cash & Carry | 28/08/2012 | | |
| TB Cash & Carry | 28/08/2012 | | |
| Bestways | 29/08/2012 | | |

Create Order

Amend Order

List all Items on Order

Transmit Order

Delete Order

Print Order

Exit

- Once updated this takes you to this page which will show you any suppliers you are awaiting orders from. Than to send your order press "Transmit Order" in which you can send via email or fax

Supplier: 000001 Bestway - Telephone: 0113
 Order Raised: Tue 28 Aug 2012 - Vat: - Order No:

| Item Code | Item Description | Supplier Item Code | Packs Ordered | Pack Size | Pack Price | Order Value |
|-----------|------------------------|--------------------|---------------|-----------|------------|-------------|
| 280059 | Coke Light 500ml | 148087 | 1 | 24 | 16.25 | 16.25 |
| 280112 | Becks Vier 5x440ml can | 619862 | 1 | 6 | 14.65 | 14.65 |
| Total | | | 2 | | | 30.90 |

Current Page No.: 1 Total Page No.: 1 Zoom Factor: 100%

- The order sheet will be print as the above it show the shop name "kasa belle isle" , which cash and carry "Bestways" and the time date and telephone number for Bestways. The items are listed as produced code, Description, Supplier code (for Bestways), amount and the agreed price.

Access

There are 3 security levels to the system.

Level 1. Operation

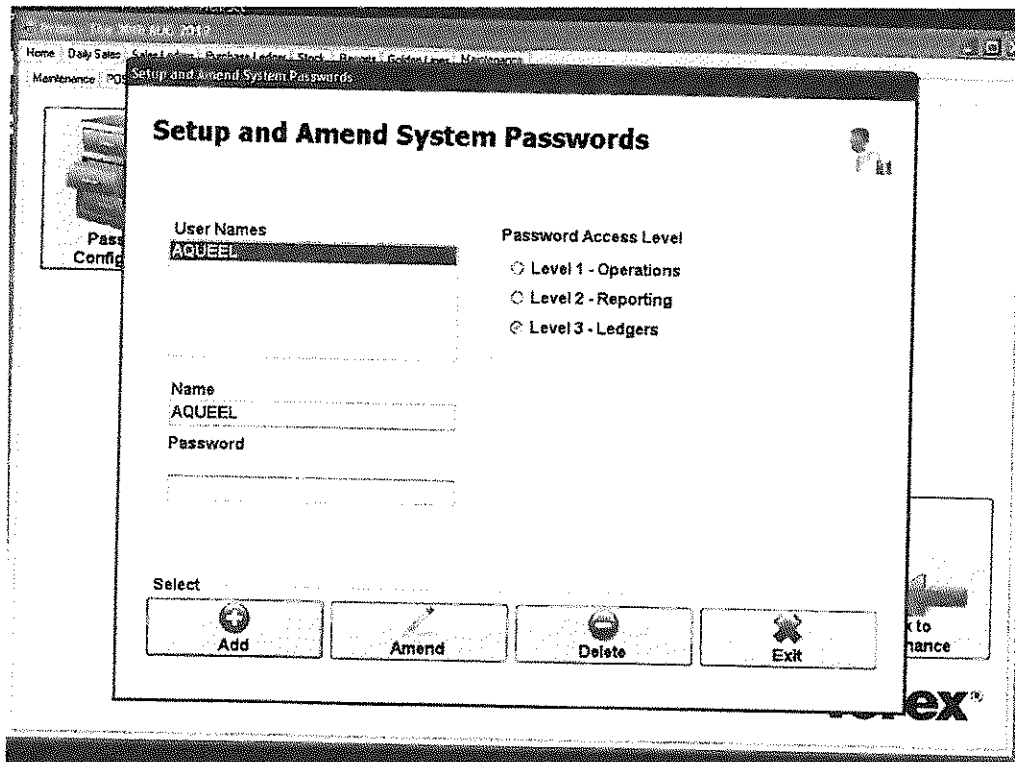
This allows you to access the system with limit, you can print orders, ensure the produce as the right bar code. This will be used by daily staffs that are not permitted to purchase produced.

Level 2. Reporting

This allows you to access most area, input new items, new cash & carry, set prices and produce reports. Only the DPS will have access to this area

Level 3. Ledgers

This allows you to access all areas. Only the DPS and the systems manufactures have access to the area.





29 August 2012

Dear Sir/Madam,

Re: Kasa Belle Isle Ltd, Belle Isle Road LS10 3QJ – A/c 2492

With regards to the above account we can confirm that they have been trading with us since 2011. They trade on a weekly basis in which orders are placed by fax/email and then the goods are delivered either the same or following day. Kasa Belle Isle Ltd is one of our valued customers and we look to continue the relationship going forward.

Regards

Sital Patel

A handwritten signature in black ink, appearing to read 'Sital Patel', written over a horizontal line.

TB Cash & Carry Leeds





BESTWAY WHOLESALE

Intercity Way,
off Swinnow Lane,
Leeds, LS13 4LQ
Tel: 0113 236 1300
Fax: 0113 236 0945
www.bestway.co.uk

11th of September 2012

To whom it may concern

I can confirm that MR ADEEL BASHIR has been trading with us since 02nd of September 2010 with the business name KASA BELLE ISLE, They place orders via email and fax. During this period he has proven to be trustworthy and reliable. He is considered to be our valued customer and we have no problems with his payments and business dealings with us.

Yours Faithfully,

Syed Atif Raza

General Manager



Awarded to:
Bestway Wholesale Division

BESTWAY WHOLESALE is a trading name of Bestway Northern Ltd.
Reg Office: 2 Abbey Road, Park Royal, London NW10 7BW. Reg No 2675585
T: 020 8453 1234 F: 020 8965 0359 W: www.bestway.co.uk



INVESTOR IN PEOPLE